

Are you ready to evolve?

Meet Botlr. The most innovative labelling machine on the market.

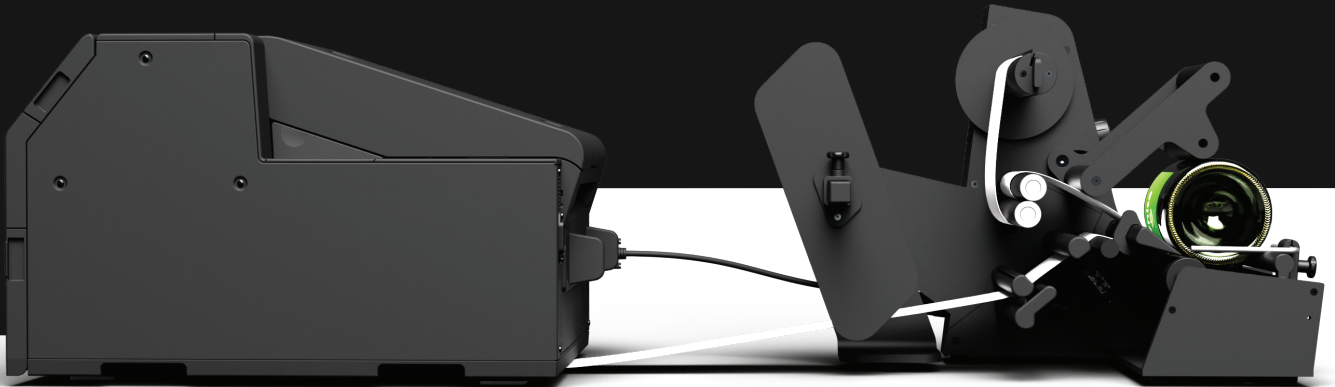


Good day to you,
I'm your Botlr.

botlr

A good Botlr never stands alone

Connectivity with multiple thermal transfer
and colour inkjet label printers.



Botlr's family

Our ever-growing family consists of beer brewers, wine estates, producers of gin, liquor, olive oil, fresh juices and smoothies, sport nutrition, food supplements, cosmetical & pharmaceutical products, canned fruits and so on.

How it all began

Labelmate is Botlr's parent company. Its mission is to make every label printing process easier, faster and more efficient. By listening to its customers, they discovered a specific need for an easy-to-use,

durable and efficient labelling machine for round bottles, jars, flacons and so on. While others copy, Labelmate innovates. That's how Botlr was born, yearning to make your labelling process easier.

www.botlr.com

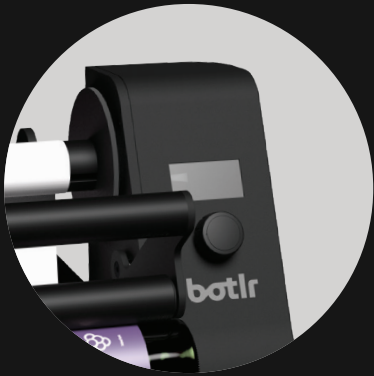
Visit our website for more information or to find a local Botlr partner.

Your Botlr partner



Unit 18 Westpoint Business Park
Mulhuddart
Dublin 15 D15 W260
sales@alsidentify.ie
www.alsidentify.ie
tel : 01-8242643

Good day to you. I'm your Botlr



Meet Botlr. The most innovative labelling machine on the market. Botlr believes that no-one should spend hours adjusting settings and measurements. When you take Botlr out of the box, he will be immediately ready to use. That's our no-nonsense philosophy.

Botlr ensures **perfect label positioning**, from the first label up until the last. Its capacity to automatically calculate the position of the second label precisely 180° opposite of the first one, makes him one of a kind.

Its **Wide OLED-Screen** displays instructions for perfect label application, and the integrated sensors provide live response when required.

Smart, as a good butler should be.

Botlr's intelligent engineering allows you to label any bottle or cylindrical object, without any length restrictions. It also supports containers with a slightly broader sealing cover, something no other bottle labelling machine can match.

Up to
300 mm
label roll diameter

Up to
120 mm
bottle diameter



A keen eye and attention to detail.

Pristine performance in every field

Botlr's **patented technology** measures the bottle diameter and calculates automatically where to place the first and (optional) second label 180° opposite... or somewhere else. Stop wasting time applying labels manually. It's time to evolve. It's time to let Botlr work for you.

Benefits

+ Patented Technology

It's patented technology calculates every bottle diameter automatically and applies your labels precisely 180° opposite to each other or on any desired place.

+ Cost reduction

Only Botlr labels +8,000 bottles a day.
That's up to 1,400 bottles an hour.

+ Flexible

Botlr can handle any bottle or container ranging from 13mm, up to 120mm in diameter, without any length restrictions.

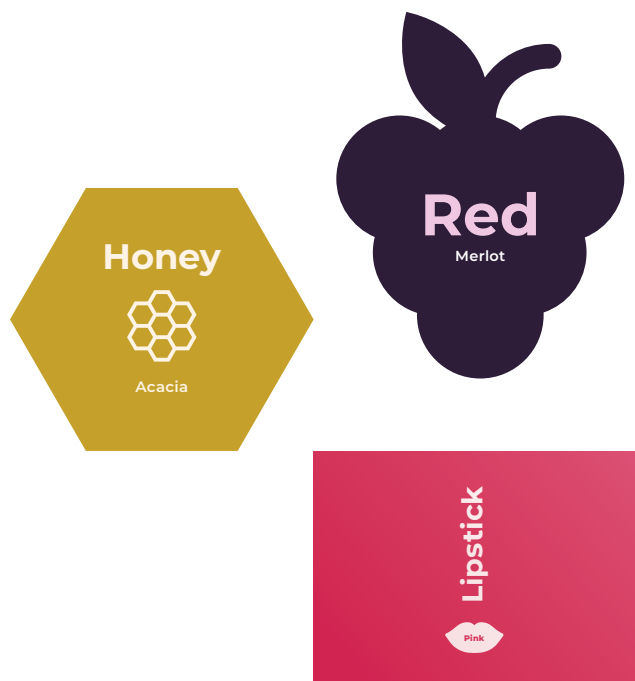
+ Transparent labels

Botlr even allows you to apply transparent labels effortlessly, without imperfections.

Any size, any shape, any material

Botlr handles one or two labels, transparent labels, a second label with different dimensions on the same label roll, two labels with a different gap-size and labels in special shapes and thicknesses. That is unparalleled.

Other than that, Botlr supports label rolls up to 300mm in diameter and 6kg in weight. He also makes sure to collect the backing material, making your work so much more efficient.



Why believe us?

When you can see for yourself.

If you want to know more about Botlr's usage and installation, you can watch our full video on our website botlr.com.



Go to botlr.com/how-it-works





Patented Technology

Botlr's technology measures the diameter of the presented bottle or cylindrical object automatically

Compatibilities & add ons

- Laser tool
 - Multiple label colour printer
-

Label Possibilities

- 1 or 2 labels
 - Transparent labels
 - 2nd label with different dimensions on the same label roll
 - Two labels with a different gap-size
 - Labels with unique shapes and thickness
 - Max. label roll width 240 mm
 - Max. label roll diameter 300 mm
 - Max. label roll weight 6 KG
-

Size & weight

- | | | | |
|----------|--------|----------|--------|
| → Height | 364 mm | → Depth | 533 mm |
| → Width | 376 mm | → Weight | 14 kg |
-

Power supply

- Input 100-240V- 1.5A
- Output 24V-DC-2.7A

