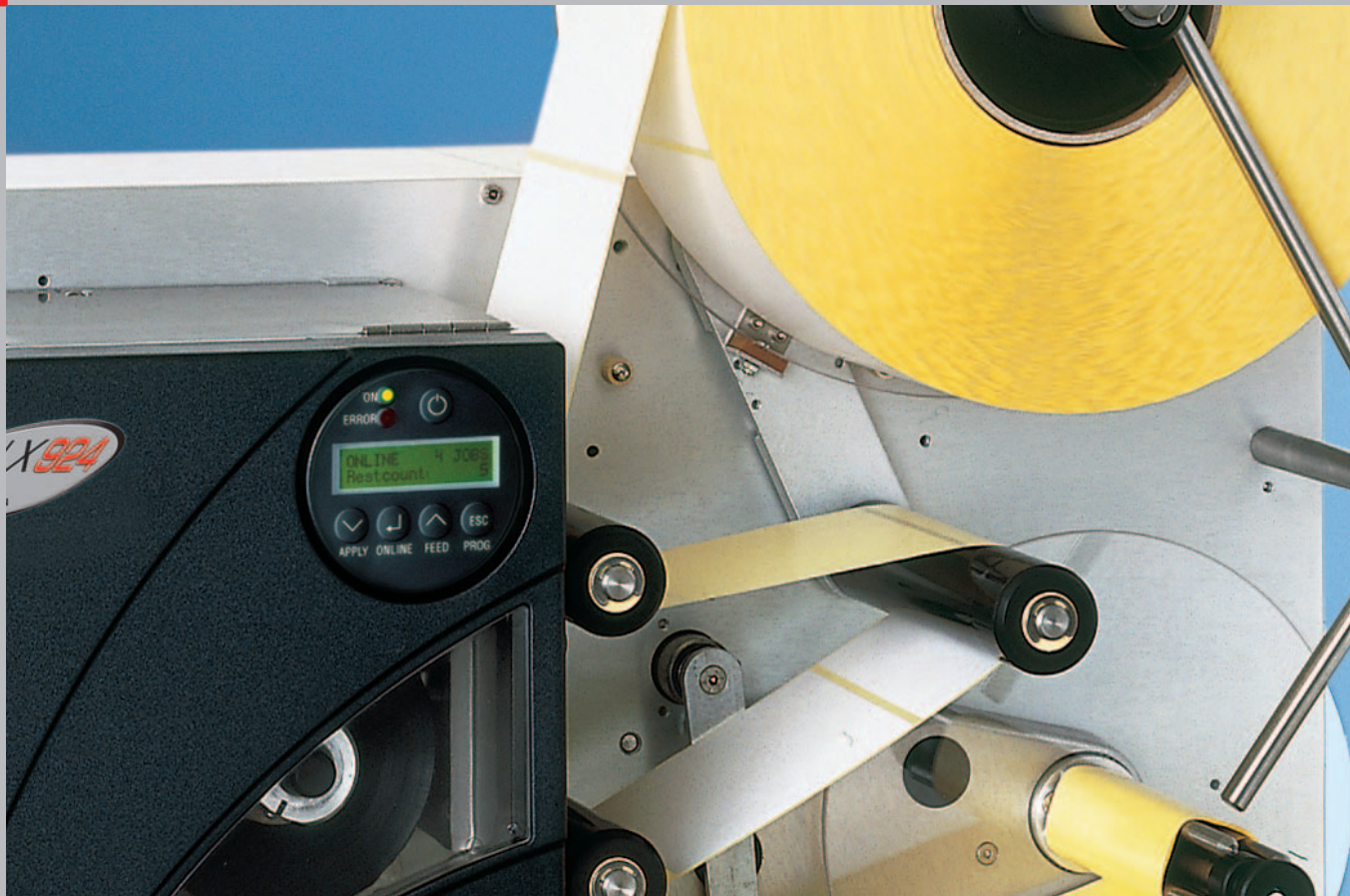


ALX 92x

The high-performer

051790



The 1:1 print & apply system
for industrial use



Link information to your product

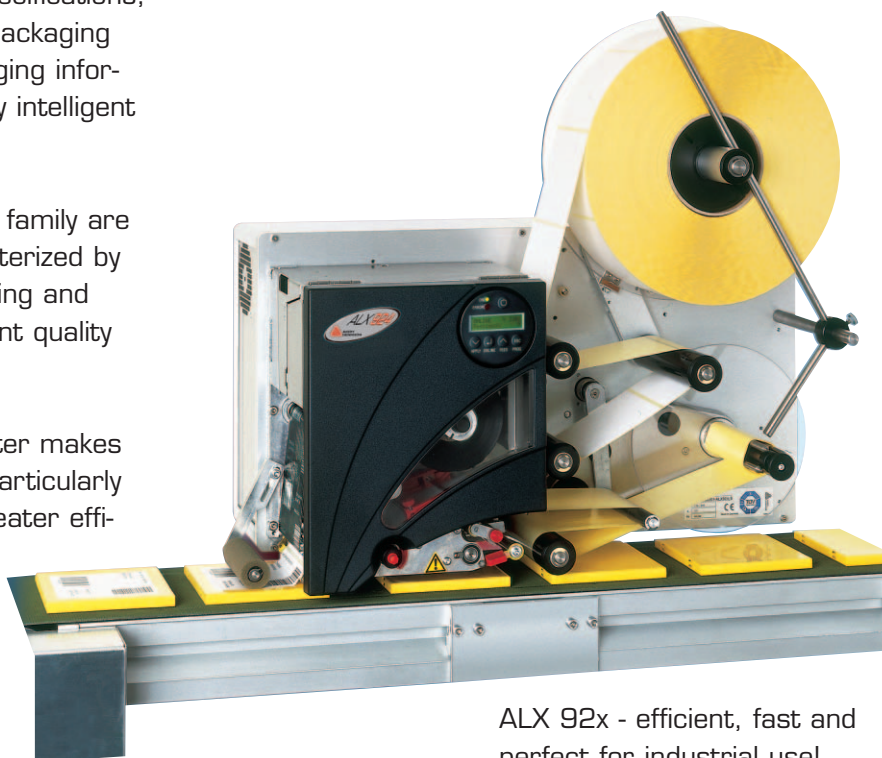
ALX 92x - efficiency and power

051790

Whether it be variable barcodes, manufacturer or product specifications, to label your products and packaging with complex and ever-changing information you need increasingly intelligent print & apply systems.

The printers of the ALX 92x family are real high-performers characterized by top results in terms of printing and dispensing speed, by top print quality and useful features.

The construction of the printer makes maintenance and handling particularly easy, thus ensuring even greater efficiency.



ALX 92x - efficient, fast and perfect for industrial use!

Endless performance

The multi-tasking operating system of the ALX 92x family benefits from a particularly high-performance 64-bit CPU. A maximum print speed of 400 mm/s and a resolution of 300 dpi allow the ALX print & apply system to mark up your products in 1:1 mode! As the machine is printing and dispensing one label, it is already working on preparing the data for the next label. This makes the ALX 92x family ideal for constantly changing print content, for instance on dispatch labels.

Whether it be the ALX 924, 925 or 926, they all deliver a constant high level of output.

You no longer need to pause the operation to change print jobs.

ALX 92x - standard features:

- Multi-tasking operating system with 64-bit CPU
- Network-compatible over Ethernet
- Multi-language display can be rotated by 355°
- Foil saving mechanism
- Integrated dot-check function
- Dispensing without applicator

Highly economical:

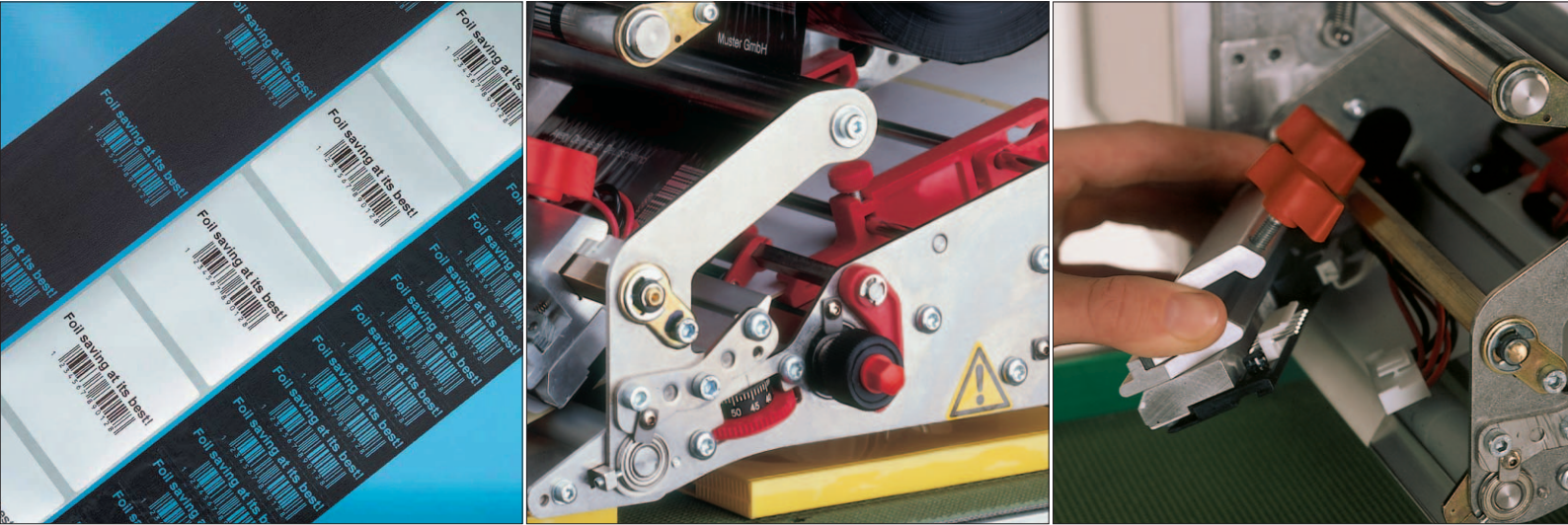
The foil saving mechanism uses all print-free areas from 6 mm.

Patented flexibility:

A unique mechanism controls the label web tension in such a way that even materials that are difficult to dispense can still be handled easily.

Practical and precise:

You can change the print head without tools. Excellent print quality is guaranteed with precise settings.



ALX 92x - Benefits of efficiency - all included

Intelligence

The use of Ethernet allows ALX 92x printers to work perfectly with your system. But the printers also set the standard offline. For instance the display allows you to enter label contents for text, number and barcode fields when you start printing, and the dot-check function guarantees top quality results. The early warning system identifies when foil or material resources are running low and this ensures that downtimes can be reduced considerably.

Economy

The ALX 92x family is particularly economical thanks to its foil saving mechanism. High print speeds, a robust power supply for continuous operation and foil rolls of up to 1000 m in length make this high-performer unbeatable in terms of running costs.

User-friendliness

The multi-language display is perfect for use in a multi-national environment. The print head and print drum can be replaced quickly and easily. The backing material roller is automatically controlled by a dancer-arm and ensures uninterrupted operation. Whether it is used with or without an applicator, the universal dispensing edge makes handling easier.

The perfect solution

Choose from three models, ALX 924 for a print width of up to 106 mm (4"), ALX 925 for up to 127 mm (5") or ALX 926 for up to 160 mm (6"), all of which are available in both right and left-hand versions. With 17 fonts, all current barcodes, compact flash card expansion and a great degree of versatility, these models cover the entire range of industrial requirements and can label in practically any position. The ideal starting point for first class print & apply labeling!

Your ALX 92x at a glance

Print technology:	Direct thermal and thermal transfer printer		
Print resolution:	12 dot/mm; near-edge print head		
Print speed:	50 through 400 mm/s, can be set in increments of 5 mm		
Print length:	Up to 1000 mm		
Foil saving mechanism:	From 6 mm unprinted area, depending on the print speed		
Memory:	64 MB RAM, 1 slot for Compact Flash Card, 1 Slot for MMC/SD		
Emulation:	Easy Plug, Line Printer, Hex Dump, ZPL II		
Interfaces:	Serial RS 232 (maximum baud rate 115,2 KB), D-Sub 9, parallel Centronics, Ethernet, USI I/O board (5V or 24V direct current interface), 2 USB host, 1 USB device, RS422/485 (optional), WLAN, Web-Server, Ftp-Server		
Fonts:	17 fonts including OCR-A and OCR-B, 3 scalable fonts, True Type fonts are supported; scalable in X/Y direction up to factor 16; rotation of internal character sets, barcodes, lines and graphics by 0, 90, 180, 270° for fix size fonts, 0°-359,9° for scalable fonts; True Type fonts are infinitely rotatable		
Barcodes:	1-dimensional: EAN 8 and EAN 13 with 2 and 5 digit add-on, UPC-A, UPC-E, Code 39, Code 39 Ratio 3:1 and Ratio 2,5:1; Code ITF, Codabar, Code 128, Code 2/5, Code 2/5 1, Code 2/5 5, Code 2/5 Interleaved Ratio 1:3, Code 2/5 Matrix Ratio 1:2,5; Code 2/5 Matrix Ratio 1:3; Code MSI, Code EAN 128; Postcode (routing and ID code), UPS Code 128, Code 128 Pharmacy; all barcodes available in 30 widths and freely scalable in height; 2-dimensional: Data Matrix Code, Maxi Code, PDF 417, Codablock F, Code 49, RSS, EAN UCC composite symbology		
Graphics:	BMP, PCX, JPG, TIF, GIF		
Software:	Drivers for all current versions of windows		
Material specifications:	Self-adhesive, card and synthetic materials up to 240g/m ² , suitable for printing using direct thermal and thermal transfer methods, rolls with a maximum external diameter 300 mm, internal diameter of 1.5" (38 mm), with adapter 3" (76 mm) or 4" (102 mm)		
Foil specifications:	Outer foil diameter maximum 110 mm, foil length up to 1000 m, core diameter 1" (25.4 mm) or 1.5" (40.2 mm), depending on the configuration of the machine		
Control panel:	Indirectly lit LCD with two lines of 16 characters, multi-language, can be rotated by 355°		
Power supply:	100 - 240 V, 50/60 Hz		
Standards:	CE, GS, TÜV		
Environmental requirements:	Operating temperature: 5 through to 35°C (ALX 926 through to 30°C), atmospheric humidity: 45% to 75 %, non-condensing		
Accessories (standard):	Self-initiating transmitted light sensor (manual or electronic position setting), sensor for foil supply, dancer-arm controlled backing material roller, option to control tensioning of the label web, material roller 1.5", 3", 4", real time clock		
Accessories (optional):	Guide spindle to allow fine tuning of the mechanical position, sensor for material supply, pressure rollers, adjustable dispensing edge for direct and indirect application, applicators, offline version with keyboards, RFID Kit available for UHF 869 MHz, 915 MHz, 915 MHz or HF 13,56 MHz		
	ALX 924	ALX 925	ALX 926
Print width:	106 mm	127 mm	160 mm
Label width:	16-130 mm	16-130 mm	16-184 mm
Dimensions (WxHxD):	612 x 565 x 381 mm	612 x 565 x 381 mm	612 x 565 x 435 mm
Weight:	35 kg	35 kg	39 kg

Specifications are subject to change without prior notice (06/2007)

The name Avery Dennison is associated worldwide with perfect labelling. In addition to print & applysystems and thermal transfer printers, we also offer: Service, Software and Consumables



You're never far from an Avery Dennison representative:

Benelux
Denmark / Scandinavia
France

Germany
Italy
Turkey

USA
People's Republic of China / Hong Kong



Link information to your product